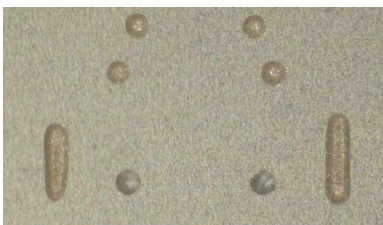


# Time Pressure for Benchtop & Retrofit

## Time Pressure for Simple Dispensing with Disposable Syringe

*Applications: Full Range of Fluid Viscosities*

*Time pressure* is a versatile method of dispensing that functions across a wide range of viscosities. This dispense method works by applying pressure to the syringe. This pressure pulse is controlled by software and can be used to dispense lines, fills, and dots. With an appropriate fluid and nozzle configuration, **very fine and repeatable dots and lines can be dispensed.**



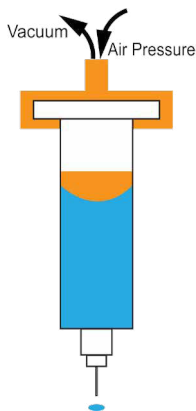
Structural and electrical conductive adhesives.  
Dots at 0.011" (0.27 mm).

**The amount of pressure** is controlled by a regulator on a controller and determined by the relationship between the material being dispensed and the application flow rate. When dispensing is finished, an adjustable vacuum is applied to the syringe to prevent material from dripping. The vacuum is adjustable to avoid pulling air into the needle.

**Syringe sizes** from 5 cc to 30 cc may be used with the included syringe kit.



Time Pressure with 10 cc Syringe



Operation Diagram

*This is a great addition to fully automatic systems*



**Clean up** using the time pressure method of dispensing is very simple. Because material is dispensed directly from the syringe, the operator may dispose of the syringe after it is empty. Additionally, the needles commonly used are disposable Luer-Lok® type. Again, no cleaning is required because all wetted parts are disposable.

**The time pressure controller** and its included foot switch can be used in bench top and automated platform environments. For bench top, an operator holds and manually positions the syringe, and triggers the dispense with the foot switch. For automated platforms, a syringe holder is available and dispensing is triggered by the same foot switch input. Contact GPD Global for details.

### Specifications

TIME PRESSURE PUMP	
Syringe Compatibility	EFD or Semsco: 5 cc, 10 cc, 30 cc
Viscosity Range	1 to 100,000+ cps. Consult GPD for details.
Pressure Range	1 to 80 psi
Pulse Time (minimum)	0.030 s

CONTROLLER	
Dimensions (W x D x H)	150 mm x 172 mm x 108 mm (5.9" x 6.8" x 4.25")
Trigger Signal	Footswitch / Dry Contact
Input Air Pressure (max)	100 psi
User Interface	Push Button
Cable Length (foot switch)	173 cm (68")



Rev Feb 2018

[www.gpd-global.com](http://www.gpd-global.com) • [request@gpd-global.com](mailto:request@gpd-global.com)

Headquarters 611 Hollingsworth Street, Grand Junction, CO 81505 USA • T: +1.970.245.0408 • F: +1.970.245.9674  
GPD Global (Asia Pacific) Bayan Lepas, Penang, 11900 Malaysia • T: +60.12.555.0909