

# SimpleCoat

## Selective Conformal Coating System

### Cost-effective Solution for Conformal Coating

#### Conformal Coating System Features

SimpleCoat is ideal for selective conformal coating and dispensing applications that require a high level of accuracy and repeatability. It is an ideal solution for medium and low volume. A stand-alone configuration is also available for manufacturing that does not require a conveyor.

SimpleCoat is equipped with a robust 3-axis motion platform that, in the base configuration, includes a spray valve and a needle valve. An optional volumetric pump may be used in place of the needle valve.

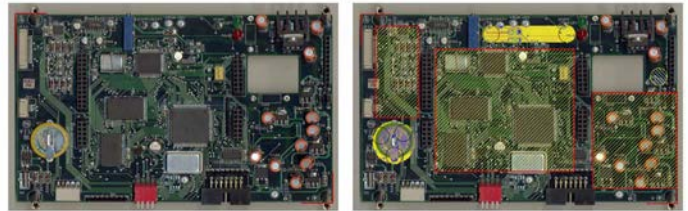


Some applications require coating on products with a complex geometry. For these types of products, a standard top-down coating may be insufficient. A tilt-and-rotate option is available for the spray valve. This option allows the pump to be tilted and rotated to reach four sides of a product.

Fluid is supplied to the dispense valves via two 300 ml external reservoirs. Level detects, as well as large reservoirs, are available.

The stainless steel surfaces of the work area are easily cleaned in the event of a spill. An exhaust port, located below the work surface, maintains a minimal fume level. A flow sensor in the exhaust port inhibits operation if exhaust flow drops below a set level.

SimpleCoat software is installed on a user-supplied laptop computer. Programming is easy and can be done either by manually teaching a program or by using a JPG image. All dispense and motion parameters can be easily altered with the easy-to-use user interface. Standard patterns for coating of line, dot, and various area fill shapes are available.



Programming via JPG image (before and after).

#### Standard Features

- Reliable XYZ Motion System
- Full-featured Programming, including Teach from .JPG
- Inline Operation with SMEMA Communication
- Spray and Needle Valve
- Purge and Solvent Cups
- Stainless Steel Surfaces
- Bottom Side Fume Extraction with Exhaust Flow Sensor
- Two 300 ml Cartridges for Fluid Feeding
- Internal Black Light for Coating Inspection
- Keyed Maintenance Mode
- Light Tower



300 ml External Reservoir



Valves at rest in Solvent Cups



[www.gpd-global.com](http://www.gpd-global.com) • [request@gpd-global.com](mailto:request@gpd-global.com)

Headquarters 611 Hollingsworth Street, Grand Junction, CO 81505 USA • T: +1.970.245.0408 • F: +1.970.245.9674

GPD Global (Asia Pacific) Bayan Lepas, Penang, 11900 Malaysia • T: +60.12.555.0909

# SimpleCoat - Selective Conformal Coating

## Add-On Options

COMMON OPTIONS*	DESCRIPTION
Tilt-and-Rotate	Tilts and rotates spray valve.
Low Level Material Sensor	Detects fluid level in reservoir
External Pail with Scale Level Sense	Large volume reservoir
Volumetric Pump	Alternative to needle valve.
Multiple Reservoirs	Easy fluid exchange.

\* Contact GPD Global about additional options and features.

## Specifications

### Capacity

Dispense valves..... Up to 2 valves

### Motion Control

XYZ Axis Drive ..... Stepper motors plus ball screw  
 XYZ Repeatability..... 50 µm (0.002")  
 Speed ..... 350 mm (13.78") per second

### Coating Area

XYZ Travel ..... 430 mm x 430 mm x 50 mm (17" x 17" x 2")  
 Bottom Side Clearance..... 100 mm (4")

### Conveyor

Conveyor Type..... Pin Chain  
 Conveyor Width (minimum)..... 50 mm (2")  
 Conveyor Width (maximum)..... 430 mm (17")  
 Edge Clearance ..... 5 mm (0.2")  
 Transport Height..... 940 mm - 965 mm (37" - 38")  
 Communication ..... SMEMA

### Facility Requirements

Air Supply ..... 6 bar 85 PSI dry clean air  
 Exhaust Port ..... 250 CFM, 127 mm (5") diameter  
 Power ..... 110/220 VAC, 50/60 Hz

### Dimensions & Weight

Footprint (W x D x H)..... 1000 mm x 1400 mm x 1550 mm  
 (39.37" x 55.12" x 61.02")  
 Weight ..... 275 kg (605 lbs)

### Operating Control

Minimum requirements..... Customer-supplied laptop with Ethernet connection and Windows® 7 or newer.

### Certification

CE



Add-On Option: Volumetric Pump



Add-On Option: Multiple Reservoirs with Level Detect.